

## **Council**

**19 February 2019**

### **Public Interest Debate - Integrated Care System**

#### Motion

This Council believes that an integrated care system focused on communities is the right way forward for the health and wellbeing of citizens in Warwickshire.

#### **1.0 Key Issues**

- 1.1 The health and wellbeing needs of our communities have changed over recent years, with growing numbers of older people and those living with long-term conditions. This rising demand, coupled with constraints on funding in both the NHS and local authorities, is putting services under increasing pressure. Current service models are not sustainable and different ways of working are needed to provide more care in the community and integrate services.
- 1.2 There is a focus on greater collaboration to meet health and wellbeing needs, as reflected in NHS Planning Guidance 2018/19 and the new NHS Long Term Plan. There is also a priority to prevent ill-health and address inequalities, tackling risk factors such as smoking, obesity, diet, drug and alcohol use, and high blood pressure. The Long Term Plan also seeks to give people more control over their health and personalised care.

#### **2.0 Opportunities for an Integrated Approach**

- 2.1 A move to a more joined-up, integrated approach focused on preventing ill-health is needed to improve health and wellbeing in our communities. This approach was set out in Warwickshire County Council's One Organisational Plan in February 2017, as shown in Appendix 1. Two of the Council's key priorities are to build community capacity and deliver integrated health and care teams where it is of benefit to the customer.
- 2.2 There are a variety of models and the roles of partners in an integrated care model for Warwickshire are still developing. In broad terms, an integrated care system brings together NHS providers, commissioners, local authorities and other partners to work together to improve health and care in their area. An integrated care system typically operates at four levels ranging from the 'Region' to local 'Neighbourhoods', as shown in Appendix 2.
- 2.3 The Warwickshire Health and Wellbeing Board oversees the development of a more integrated approach across the health and care system. The Board has

refreshed its Health and Wellbeing Strategy for 2018-20 with priorities of promoting prevention, community resilience, and integration and working together. The work of the Place Forum with Coventry is also promoting a more integrated approach, with a refreshed Concordat and prioritising prevention in a Year of Wellbeing 2019.

2.4 Underpinning the Health and Wellbeing Board are Health and Wellbeing Partnerships in Warwickshire North, Rugby and South Warwickshire with integrated teams delivering positive outcomes for local people. A better understanding of local needs is also developing to help shape services with a place-based approach to the Joint Strategic Needs Assessment across Warwickshire.

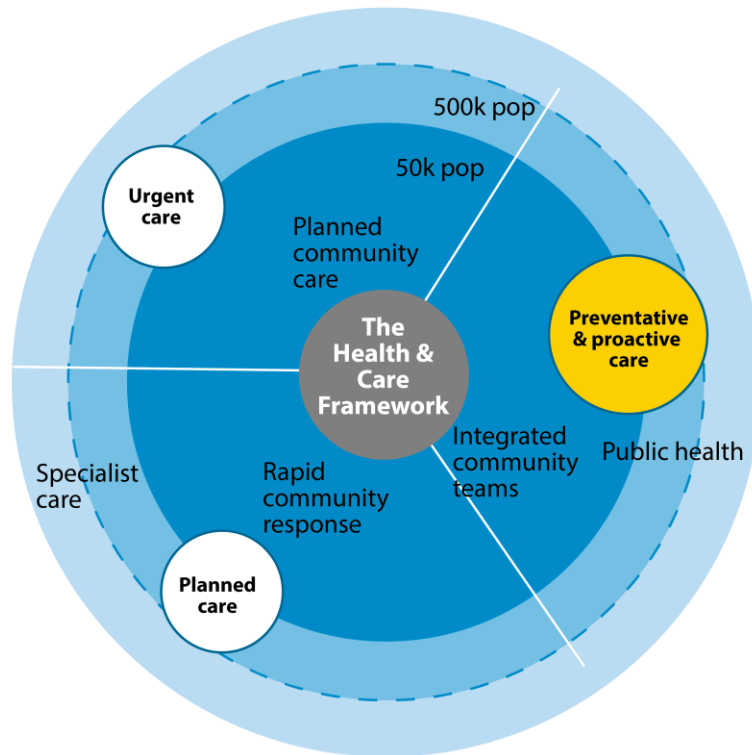
2.5 The Council is invited to consider the motion.

## Background papers

None.

	<b>Name</b>	<b>Contact Information</b>
Report Author	Rachel Barnes	<a href="mailto:rachelbarnes@warwickshire.gov.uk">rachelbarnes@warwickshire.gov.uk</a>
Assistant Director and Director of Public Health	John Linnane	<a href="mailto:johnlinnane@warwickshire.gov.uk">johnlinnane@warwickshire.gov.uk</a>
Strategic Director	Nigel Minns	<a href="mailto:nigelminns@warwickshire.gov.uk">nigelminns@warwickshire.gov.uk</a>
Portfolio Holder	Cllr Les Caborn	<a href="mailto:cllrcaborn@warwickshire.gov.uk">cllrcaborn@warwickshire.gov.uk</a>

## Appendix 1: Integrated Health and Care Model (Warwickshire County Council One Organisational Plan 2020)



## Appendix 2: Integrated Care System Model

